

**SOUTHEASTERN PUBLIC SERVICE AUTHORITY**

# **REGIONAL LANDFILL**

**Part of the SPSA Integrated Solid Waste Management System**

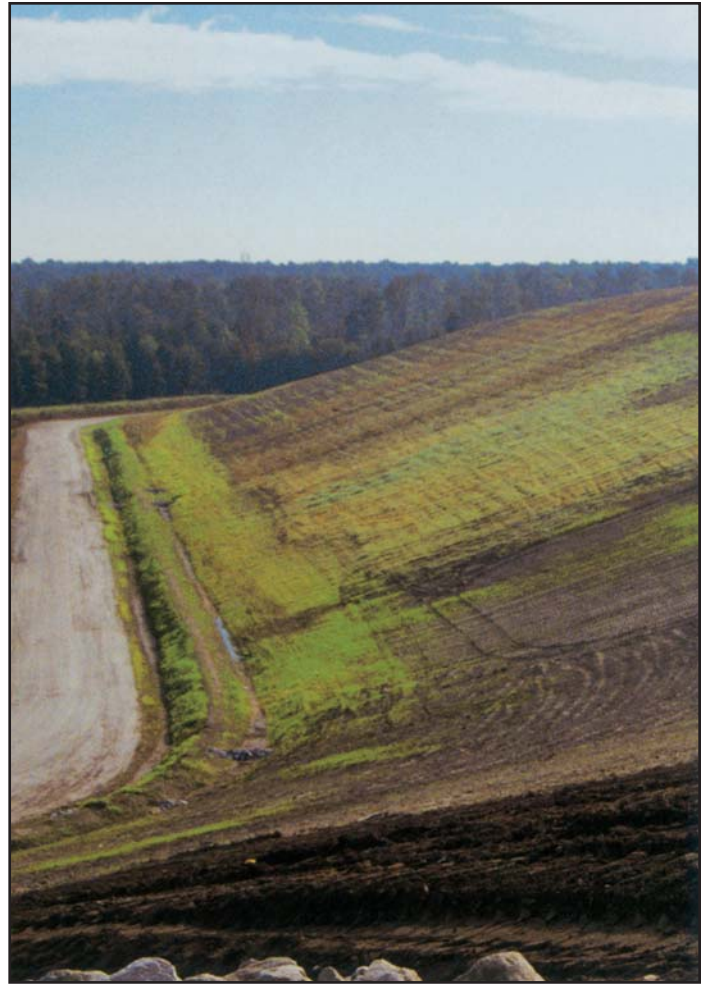
Each year, the residents and businesses within the 2,000 square mile service area of the Southeastern Public Service Authority (SPSA) generate an excess of 1,000,000 tons of solid waste. SPSA utilizes an integrated solid waste management system which beneficially uses approximately 45% of the solid waste through Recycling and Waste to Energy. The remaining 55% must be disposed of in an environmentally sound manner at the Regional Landfill in Suffolk.

## Landfilling Operations

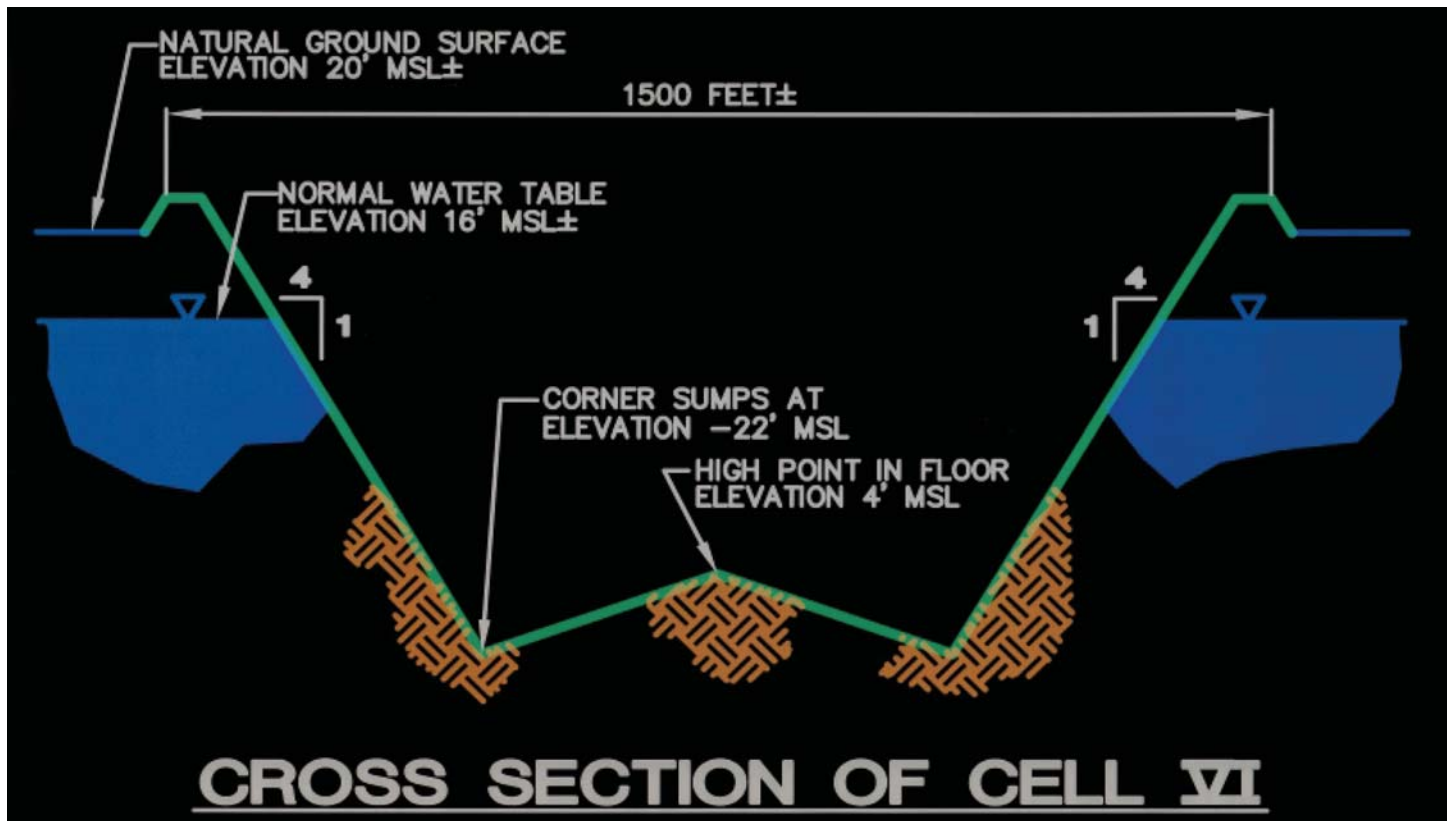
The Regional Landfill receives solid waste from a variety of sources including municipalities and private waste haulers. Most municipal garbage trucks deliver their loads to one of SPSA's transfer stations located in the communities served. The waste is separated into categories of processable, nonprocessable, and yard waste. The processable material is delivered to SPSA's Refuse Derived Fuel Plant to be converted into fuel, and yard waste is processed into mulch and compost at SPSA's yard waste recycling facility.

The nonprocessable solid waste is delivered to the Regional Landfill. The landfill also receives solid waste from Suffolk city vehicles, municipal contractors, and commercial haulers with residential, institutional and special non-hazardous waste.

Each day after the solid waste has been spread and compacted, it is covered with a six-inch layer of soil, or an equivalent alternative daily cover, to control litter, odor and insects.



*The Regional Landfill receives approximately 4,000 tons of solid waste daily.*



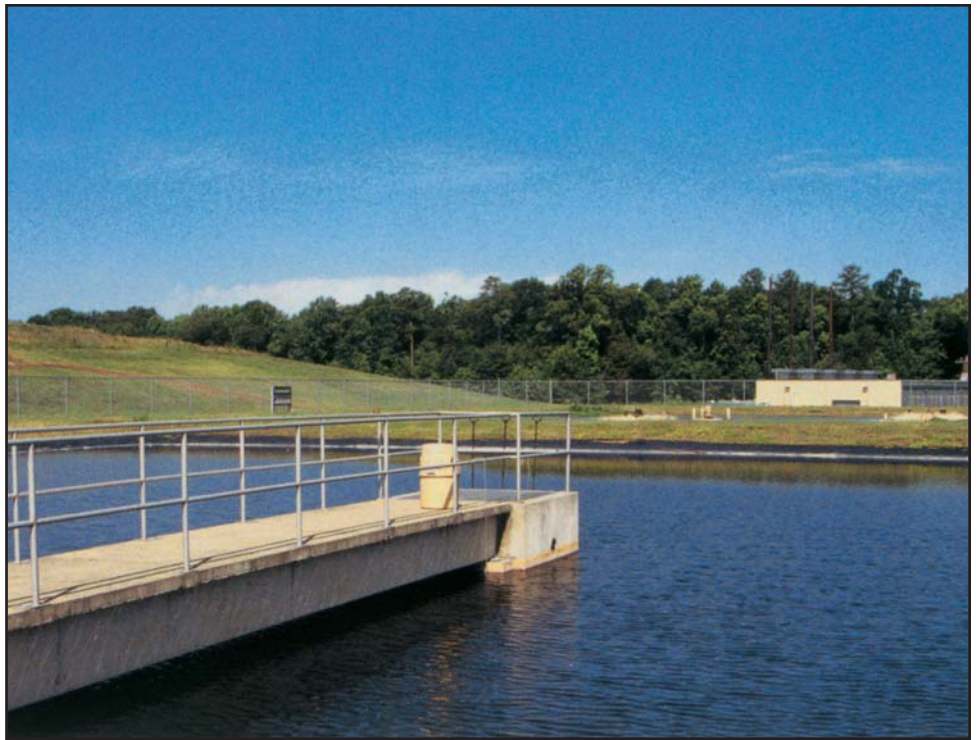
*The Regional Landfill is designed to provide safe disposal of southeastern Virginia residents' solid waste.*

## Leachate Collection and Groundwater Monitoring

The Regional Landfill is more than a place to deposit the region's nonprocessable trash. It is an opportunity for SPSA to practice its commitment to operating with sound environmental practices. This includes protecting the groundwater from leachate, the product which forms when rainwater mixes with the decomposing solid waste.

The landfill is constructed with a double composite synthetic liner system designed to prevent "leachate" (contaminated water) from seeping into and contaminating the ground-water. Pipes on the bottom of the landfill collect the leachate and transport it to a holding and aeration pond. From there, it is pumped to the Hampton Roads Sanitation District for treatment.

Groundwater is monitored regularly by SPSA staff through monitoring wells to ensure its purity.



*Groundwater is monitored regularly through landfill groundwater monitoring wells, and landfill leachate is collected in a specially designed pond and discharged to the Hampton Roads Sanitation District.*

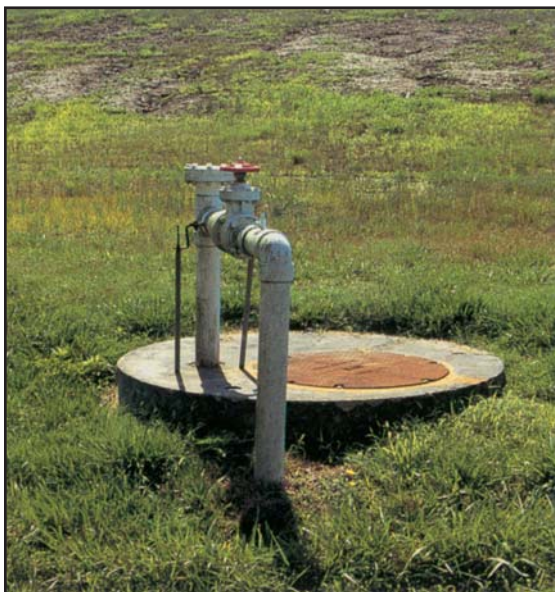
## Other On-Site Operations

Although the Regional Landfill is an important component in an integrated solid waste management system, SPSA's goal is to reduce reliance on landfilling as much as possible to preserve space and extend the life of the Regional Landfill.

Several programs are located at the landfill site which utilize innovative methods to manage the region's trash. These include tire shredding, ferrous metal recycling, landfill gas recovery operations, household hazardous waste and soil remediation.



*Solid waste received at the landfill is spread, compacted and covered with a spray foam (above) alternative daily cover or a six-inch layer of soil at the end of each work day.*



*A network of pipes and wells collect landfill gas which is converted into electricity at the three-megawatt power plant located on-site. SPSA's landfill gas recovery program produces electricity to power approximately 6,000 homes a year.*

**Tire Shredding Facility:** Tires are brought to this facility to be shredded and are either converted into fuel or recycled.

**Ferrous Metal Recycling:** Ferrous metals such as steel food cans are processed into nuggets which are sold to steel mills for reuse in making new steel.

**Landfill Gas Recovery Plant:** Landfill gas, which contains methane and carbon dioxide, is extracted by using a network of pipes and wells. The gas is used to fuel a three-megawatt power plant and is converted into electric energy which is sold to Dominion Virginia Power and as boiler fuel for a nearby industry.

**Household Hazardous Waste Collection:** The Regional Landfill is also the site for a household hazardous waste collection facility where residents may bring items such as pesticides and automotive products for proper disposal.

**Soil Remediation:** Petroleum contaminated soils are treated to render the soils usable for beneficial purposes at the landfill.

# Regional Landfill

The Regional Landfill began operation in January 1985. Approximately 4,000 tons of waste are received daily at the 833 acre site with 170 acres of permitted landfill area.

## Landfill Operations

- Solid waste spreading and compaction
- Geocomposite clay liner (GCL)
- Synthetic liner
- Force main and pumping station utilization
- Landfill gas recovery and power plant
- Leachate collection and aeration

## Equipment

- Solid waste compactors
- Excavators
- Dozers
- Articulated haulers
- Wheel and backhoe loader
- Wheel tractor
- Service truck
- Alternative daily cover sprayer

## On-Site Operations

- Ferrous metal recycling
- Tire shredding
- Used oil recycling
- Household hazardous waste collection
- Used battery collection
- Soil remediation

## Hours of Operation

- Monday - Friday, 7:30 a.m. - 4:00 p.m.
- Saturday, 7:30 a.m. - 12:00 noon
- Residential household waste accepted Monday-Sunday 7:00 a.m. to 5:00 p.m.
- Closed holidays
- Hours subject to change

For more information, call Public Information at (757) 420-4700 or the 24-hour information line at (757) 424-4297, or visit our website at [www.spsa.com](http://www.spsa.com).

*SPSA is a political subdivision of the state of Virginia and serves the solid waste management needs of Chesapeake, Franklin, Isle of Wight, Norfolk, Portsmouth, Southampton, Suffolk and Virginia Beach.*

*SPSA's mission is to manage and operate safe, cost effective and environmentally responsible solid waste collection, processing and disposal programs and facilities for the mutual benefit of the citizens, businesses, and institutions in the member communities. This mission is accomplished through the shared values of integrity, commitment, excellence, caring and competitiveness.*

# Southeastern Public Service Authority

**Regional Landfill**  
**1 Bob Foeller Drive**  
**Suffolk, VA 23434**  
**(757) 539-9373**

Boykins Transfer Station  
State Route 671  
Boykins, VA 23827

Chesapeake Transfer Station  
901 Hollowell Lane  
Chesapeake, VA 23320  
(757) 547-1114

Field Operations Headquarters  
4 Victory Boulevard  
Portsmouth, VA 23702

Franklin Transfer Station  
State Route 671  
Franklin, VA 23851  
(757) 569-8018

Isle of Wight Transfer Station  
State Route 620  
Smithfield, VA 23397  
(757) 357-7815

Ivor Transfer Station  
U.S. Route 460  
Ivor, VA 23866

Landstown Transfer Station  
1825 Concert Drive  
Virginia Beach, VA 23456  
(757) 468-3382

Norfolk Transfer Station  
3136 Woodland Avenue  
Norfolk, VA 23504  
(757) 623-6610

Oceana Transfer Station  
2025 Virginia Beach Boulevard  
Virginia Beach, VA 23462  
(757) 491-2265

Power Plant  
3809 Elm Avenue  
Portsmouth, VA 23704  
(757) 393-3100

Recycling Office  
921 Professional Place  
Chesapeake, VA 23320  
(757) 548-2256

Refuse Derived Fuel Plant  
4 Victory Boulevard  
Portsmouth, VA 23702  
(757) 393-3100

Regional Office  
723 Woodlake Drive  
Chesapeake, VA 23320  
(757) 420-4700

Yard Waste Processing Facility  
1991 Jake Sears Road  
Virginia Beach, VA 23464  
(757) 424-4631



**SOUTHEASTERN PUBLIC SERVICE AUTHORITY**

Printed on Recycled Paper with Soy Based Ink 1/07